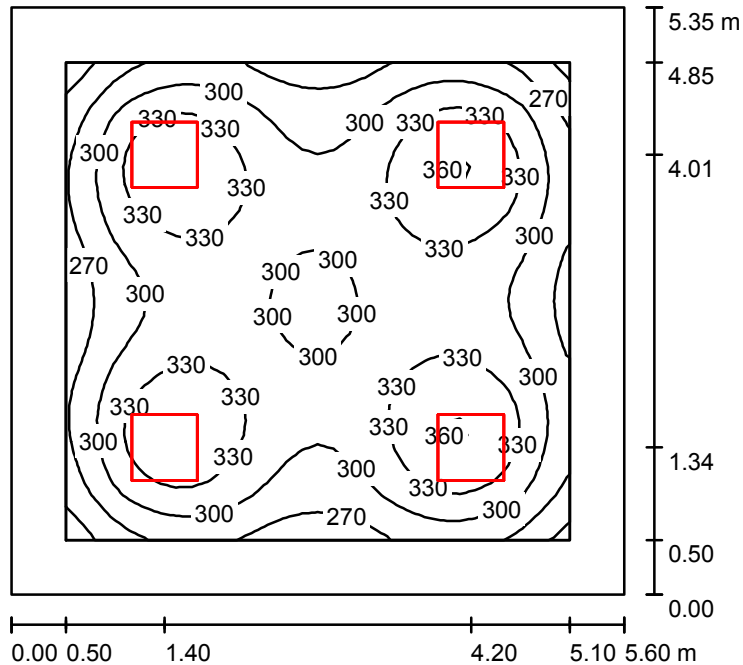


Operator  
Telephone  
Fax  
e-Mail

## кабинет 2.13, 3.14 / Summary



Height of Room: 2.940 m, Mounting Height: 2.940 m, Maintenance factor: 0.90

Values in Lux, Scale 1:69

Surface	$\rho$ [%]	$E_{av}$ [lx]	$E_{min}$ [lx]	$E_{max}$ [lx]	$u_0$
Workplane	/	309	224	367	0.725
Floor	20	234	143	283	0.612
Ceiling	70	62	44	72	0.702
Walls (4)	50	148	54	234	/

### Workplane:

Height: 0.800 m  
Grid: 32 x 32 Points  
Boundary Zone: 0.500 m

Illuminance Quotient (according to LG7): Walls / Working Plane: 0.498, Ceiling / Working Plane: 0.201.  
Proportion of points with less than 400 lx (for IEQ-7): 100.00%.

### Luminaire Parts List

No.	Pieces	Designation (Correction Factor)	$\Phi$ (Luminaire) [lm]	$\Phi$ (Lamps) [lm]	P [W]
1	4	OCTA-LIGHT PLC OCTL-OLS-30-RNWR (1.000)	3040	3100	28.0
Total:			12160	12400	112.0

Specific connected load:  $3.74 \text{ W/m}^2 = 1.21 \text{ W/m}^2/100 \text{ lx}$  (Ground area:  $29.96 \text{ m}^2$ )